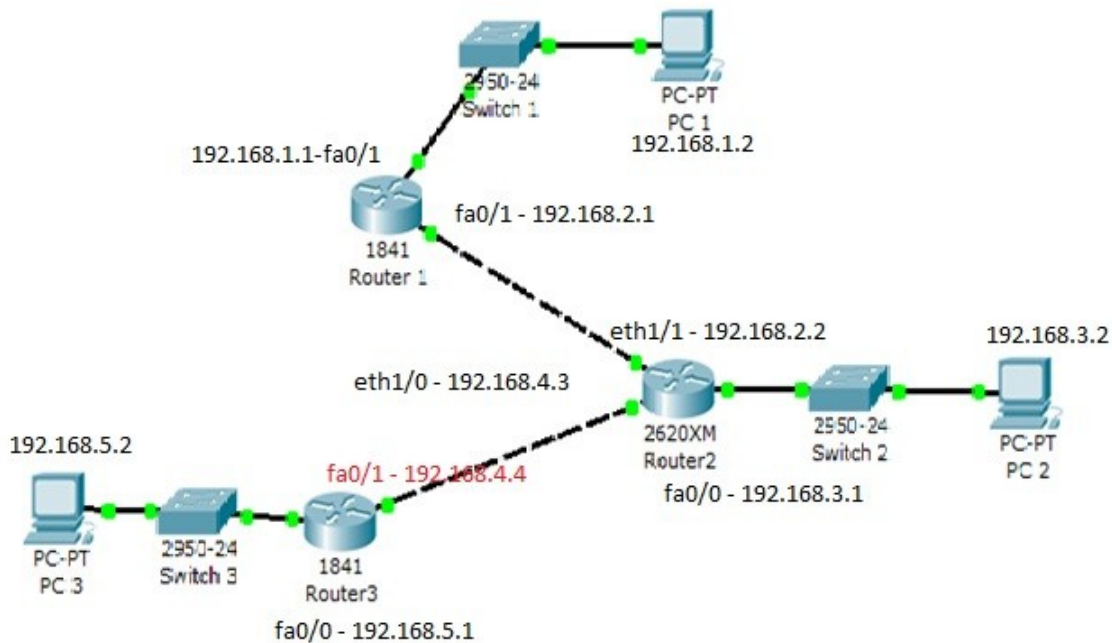


Semester ini saya mengambil matakuliah cisco berhubung blog yang satunya lupa username dan password (parah lupanya) akhirnya saya mengisi di blog ini aja. Gpp lah mengisi dengan sesuatu yang sedikit bermanfaat  
Beberapa hari yg lalu saya mengikuti perkuliahan itu dan disuruh membuat routing static.ehm untuk pengertian apa itu routing static silahkan tanya mbah gugel ya, uda banyak yg membahasnya :D. Berhubung harga om cisco yang mahal makanya kita gunakan paket tracer aja ya :D. Okey, langsung aja ya



Disini kita menggunakan 3 router, 3 switch dan 3 PC. Untuk router 2 menggunakan jenis 2620 XM dan ditambah module 2E2W.

Settingannya sebagai berikut

PC 1 menggunakan IP address 192.168.1.2, mask 255.255.255.0 dan gateway 192.168.1.1

PC 2 menggunakan IP address 192.168.3.2, mask 255.255.255.0 dan gateway 192.168.3.1

PC3 menggunakan IP address 192.168.5.2, mask 255.255.255.0 dan gateway 192.168.5.1

### Setting router 1

```
Router>enable
```

```
Router#conf
```

```
Router#configure ter
```

```
Router#configure terminal
```

```
Enter configuration commands, one per line. End with CNTL/Z.
```

```
Router(config)#interface fa0/1
```

```
Router(config-if)#ip address 192.168.1.1 255.255.255.0
```

```
Router(config-if)#no shutdown
```

```
%LINK-5-CHANGED: Interface FastEthernet0/1, changed state to up
```

```
Router(config-if)#exit
```

```
Router(config)#exit
```

```
Router#
```

```
%SYS-5-CONFIG_I: Configured from console by console
```

```
Router#write
```

```
Building configuration...
```

```
[OK]
```

```
Router#
```

```
Router#enable
Router#confi
Configuring from terminal, memory, or network [terminal]? terminal
Enter configuration commands, one per line. End with CNTL/Z.
Router(config)#interface fa0/1
Router(config-if)#ip address 192.168.2.1 255.255.255.0
Router(config-if)#no shutdown
Router(config-if)#exit
Router(config)#exit
Router#
%SYS-5-CONFIG_I: Configured from console by console

Router#write
Building configuration...
[OK]
Router#
```

#### Setting router 2

```
Router#configure terminal
Enter configuration commands, one per line. End with CNTL/Z.
Router(config)#interface Ethernet1/0
Router(config-if)#
Router(config-if)#exit
Router(config)#interface Ethernet1/0
Router(config-if)#ip address 192.168.4.3
% Incomplete command.
Router(config-if)#ip address 192.168.4.3 255.255.255.0
Router(config-if)#no shutdown

Router(config-if)#
%LINK-5-CHANGED: Interface Ethernet1/0, changed state to up

Router(config-if)#exit
Router(config)#exit
Router#
%SYS-5-CONFIG_I: Configured from console by console
```

```
Router#write
```

```
Router#enable
Router#configure terminal
Enter configuration commands, one per line. End with CNTL/Z.
Router(config)#interface Ethernet1/1
Router(config-if)#ip address 192.168.2.2 255.255.255.0
Router(config-if)#no shutdown

%LINK-5-CHANGED: Interface Ethernet1/1, changed state to up

%LINEPROTO-5-UPDOWN: Line protocol on Interface Ethernet1/1, changed state
to up

Router(config-if)#exit
Router(config)#exit
Router#
%SYS-5-CONFIG_I: Configured from console by console

Router#write
Building configuration...
[OK]
```

```
Router#enable
Router#confi
Router#configure terminal
Enter configuration commands, one per line. End with CNTL/Z.
Router(config)#interface fa0/0
Router(config-if)#ip address 192.168.3.1 255.255.255.0
Router(config-if)#no shutdown

%LINK-5-CHANGED: Interface FastEthernet0/0, changed state to up

%LINEPROTO-5-UPDOWN: Line protocol on Interface FastEthernet0/0, changed
state to up

Router(config-if)#exit
Router(config)#exit
Router#
%SYS-5-CONFIG_I: Configured from console by console

Router#write
Building configuration...
[OK]
Router#
```

### Setting router 3

```
Router>ENABLE
Router#
Router#configure
Configuring from terminal, memory, or network [terminal]? terminal
Enter configuration commands, one per line. End with CNTL/Z.
Router(config)#interface fa0/1
Router(config-if)#ip address 192.168.4.3 255.255.255.0
Router(config-if)#no shutdown

Router(config-if)#
%LINK-5-CHANGED: Interface FastEthernet0/1, changed state to up

%LINEPROTO-5-UPDOWN: Line protocol on Interface FastEthernet0/1, changed
state to up
%IP-4-DUPADDR: Duplicate address 192.168.4.3 on FastEthernet0/1, sourced by
000B.BE60.2001
%IP-4-DUPADDR: Duplicate address 192.168.4.3 on FastEthernet0/1, sourced by
000B.BE60.2001

Router(config-if)#ip address 192.168.4.4 255.255.255.0
Router(config-if)#no shutdown
Router(config-if)#exit
Router(config)#inter
Router(config)#interface fa0/0
Router(config-if)#ip address 192.168.5.1 255.255.255.0
Router(config-if)#no shutdown

%LINK-5-CHANGED: Interface FastEthernet0/0, changed state to up

%LINEPROTO-5-UPDOWN: Line protocol on Interface FastEthernet0/0, changed
state to up

Router(config-if)#exit
Router(config)#exit
Router#
%SYS-5-CONFIG_I: Configured from console by console
```

Sekarang setelah semua router sudah disetting selanjutnya adalah melakukan setting static router. Seperti pengertiannya dalam router static semua rute admin yang menentukan. Untuk itu kita harus membuat dan menentukan rute untuk setiap jalur yg diinginkan. Nah begini nih settingan rutenya.

Mengatur rute pada router 1

```
Router>enable
Router#configure terminal
Enter configuration commands, one per line. End with CNTL/Z.
Router(config)#ip route 192.168.3.0 255.255.255.0 192.168.2.2
// membuat jalur menuju network 192.168.3.0 dengan melalui network 192.168.2.2. apabila host dari network
192.168.1.0 mau menuju ke network 192.168.3.0 maka melalui network 192.168.2.2
Router(config)#ip route 192.168.5.0 255.255.255.0 192.168.2.2
Router(config)#
```

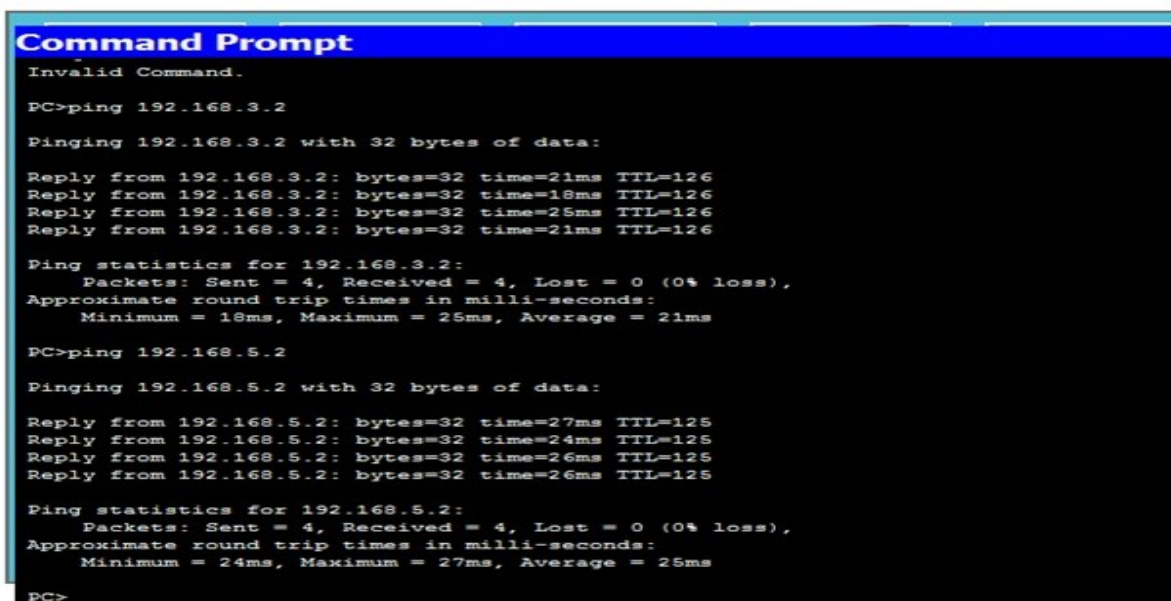
Mengatur rute pada router 2

```
Router#configure terminal
Enter configuration commands, one per line. End with CNTL/Z.
Router(config)#ip route 192.168.1.0 255.255.255.0 192.168.2.1
Router(config)#ip route 192.168.5.0 255.255.255.0 192.168.4.4
Router(config)#
```

Mengatur rute pada router 3

```
Router#
Router#configure terminal
Enter configuration commands, one per line. End with CNTL/Z.
Router(config)#ip route 192.168.3.0 255.255.255.0 192.168.4.3
Router(config)#ip route 192.168.1.0 255.255.255.0 192.168.4.3
Router(config)#
```

sekarang setelah di setting kita test, pake ping ato bisa juga menggunakan lambang pesan bagian kanan. Ini hasil ping nya



```
Command Prompt
Invalid Command.

PC>ping 192.168.3.2

Pinging 192.168.3.2 with 32 bytes of data:

Reply from 192.168.3.2: bytes=32 time=21ms TTL=126
Reply from 192.168.3.2: bytes=32 time=18ms TTL=126
Reply from 192.168.3.2: bytes=32 time=26ms TTL=126
Reply from 192.168.3.2: bytes=32 time=21ms TTL=126

Ping statistics for 192.168.3.2:
    Packets: Sent = 4, Received = 4, Lost = 0 (0% loss),
    Approximate round trip times in milli-seconds:
        Minimum = 18ms, Maximum = 26ms, Average = 21ms

PC>ping 192.168.5.2

Pinging 192.168.5.2 with 32 bytes of data:

Reply from 192.168.5.2: bytes=32 time=27ms TTL=125
Reply from 192.168.5.2: bytes=32 time=24ms TTL=125
Reply from 192.168.5.2: bytes=32 time=26ms TTL=125
Reply from 192.168.5.2: bytes=32 time=26ms TTL=125

Ping statistics for 192.168.5.2:
    Packets: Sent = 4, Received = 4, Lost = 0 (0% loss),
    Approximate round trip times in milli-seconds:
        Minimum = 24ms, Maximum = 27ms, Average = 25ms

PC>
```